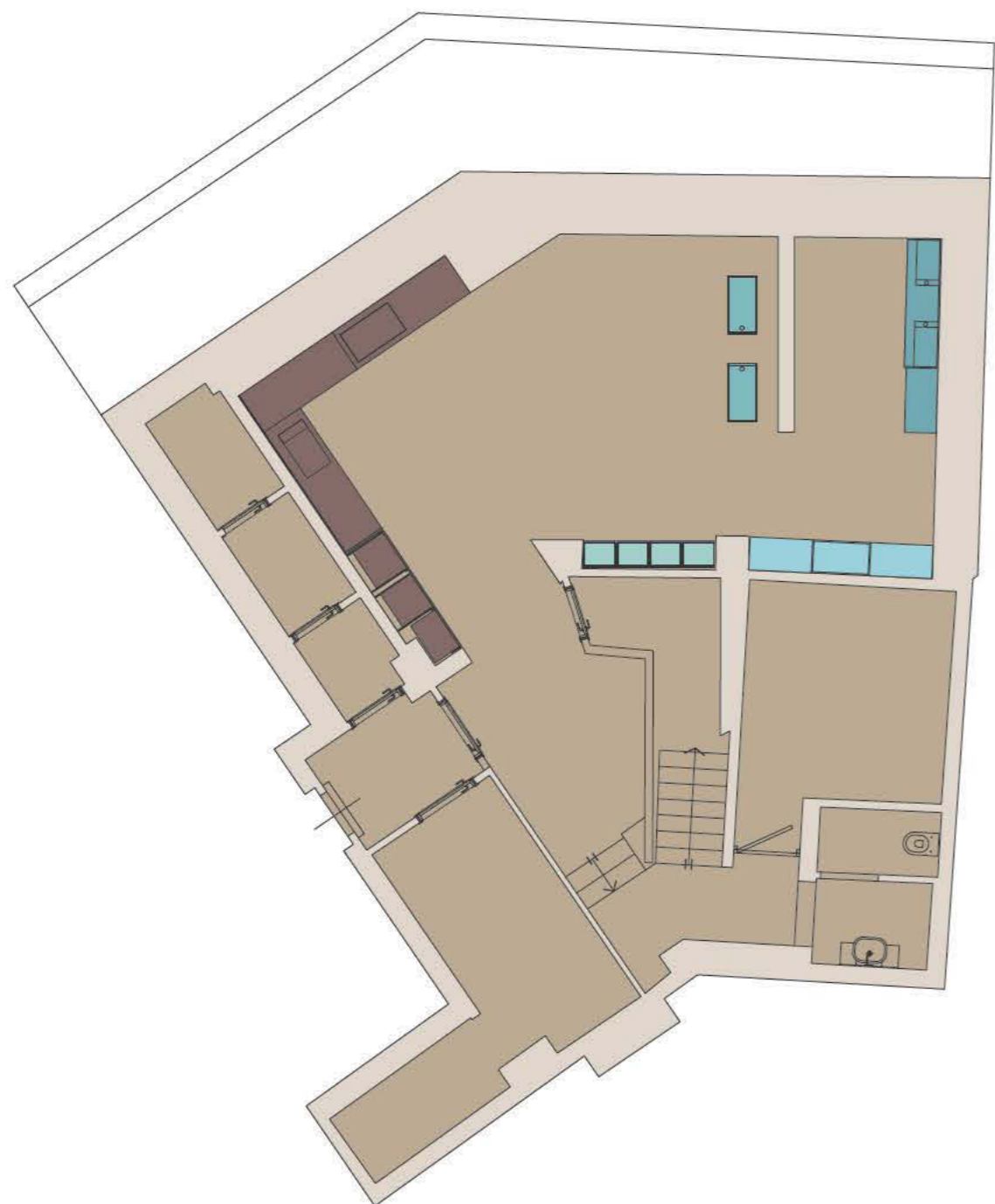


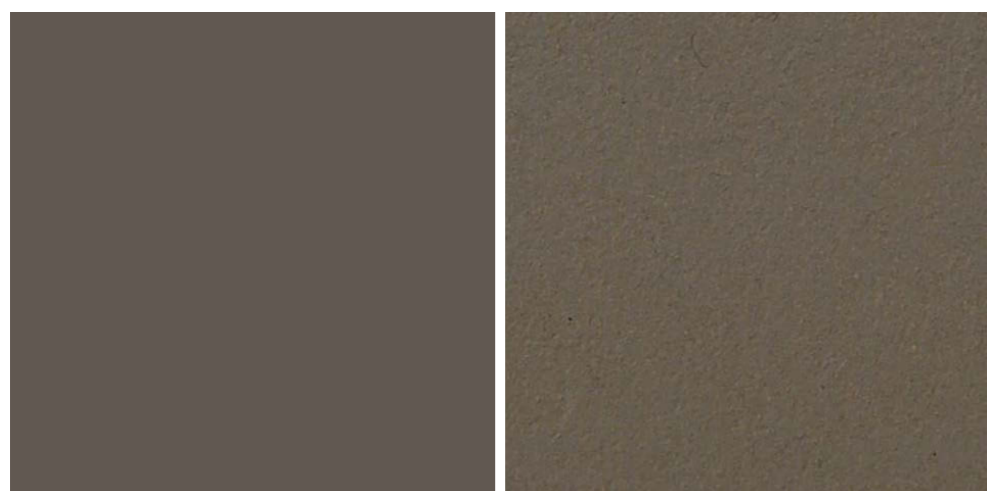


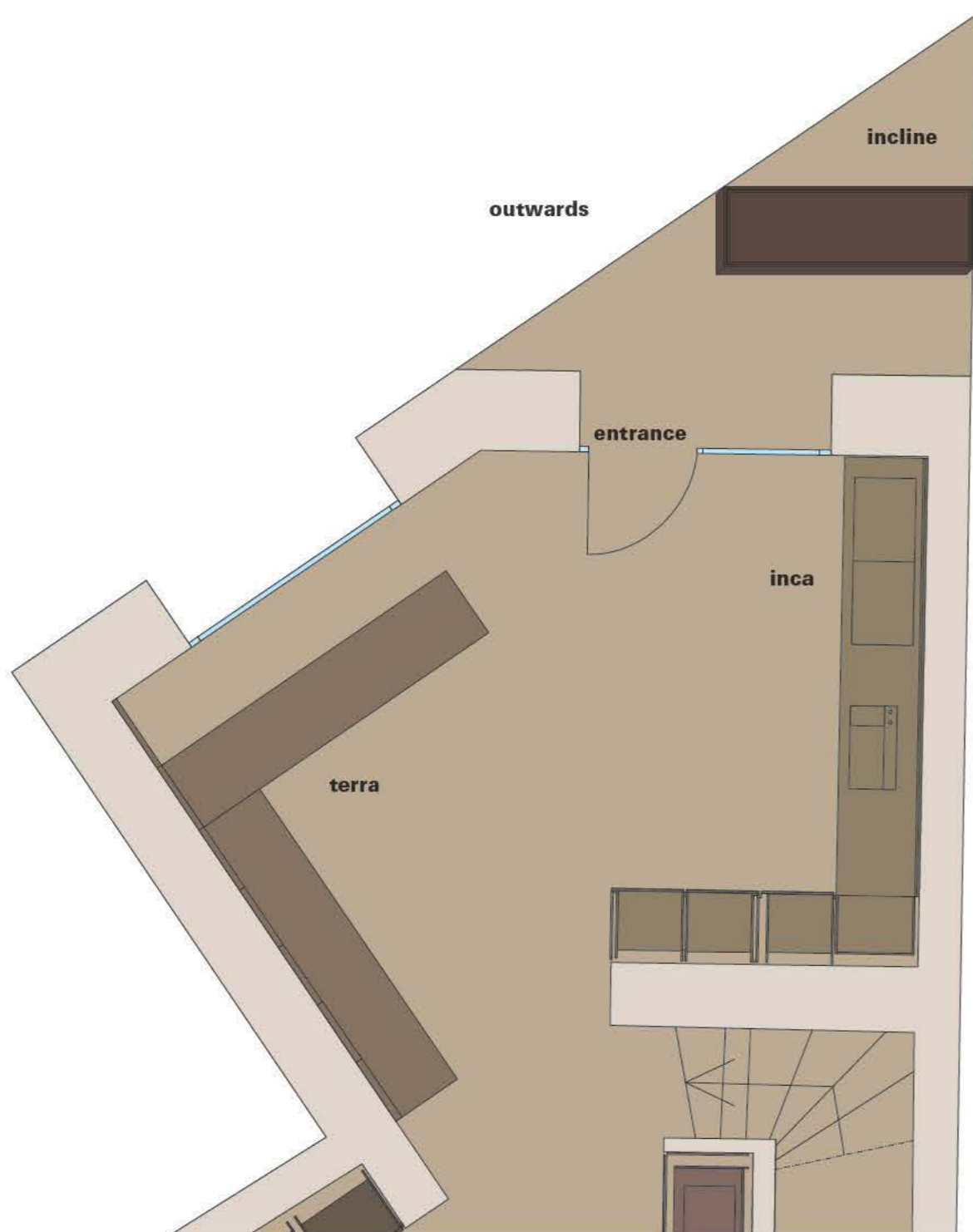
minotticucinemilano is located in via larga 4, nearby the duomo. an area of 350 square meters with 4,5 meters height ceilings. other competitor's showrooms in the same street are cesar and dada.







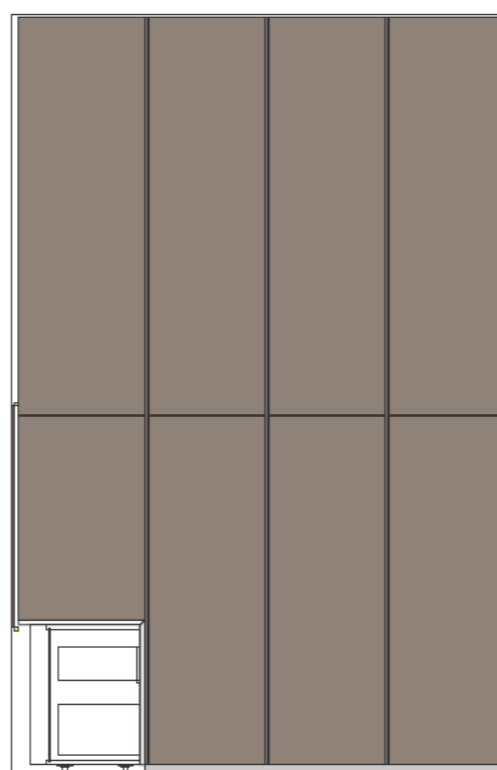
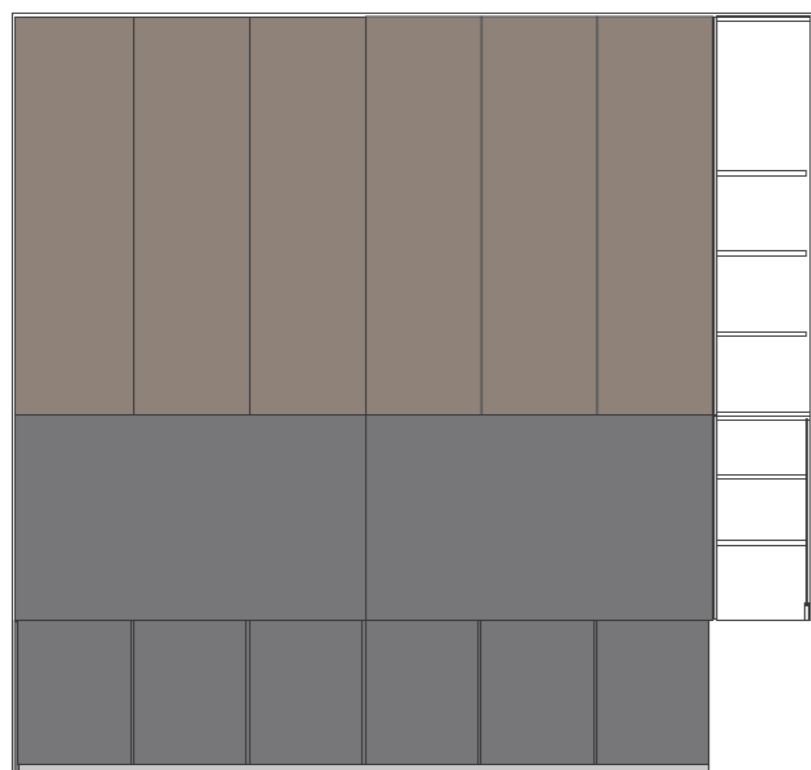




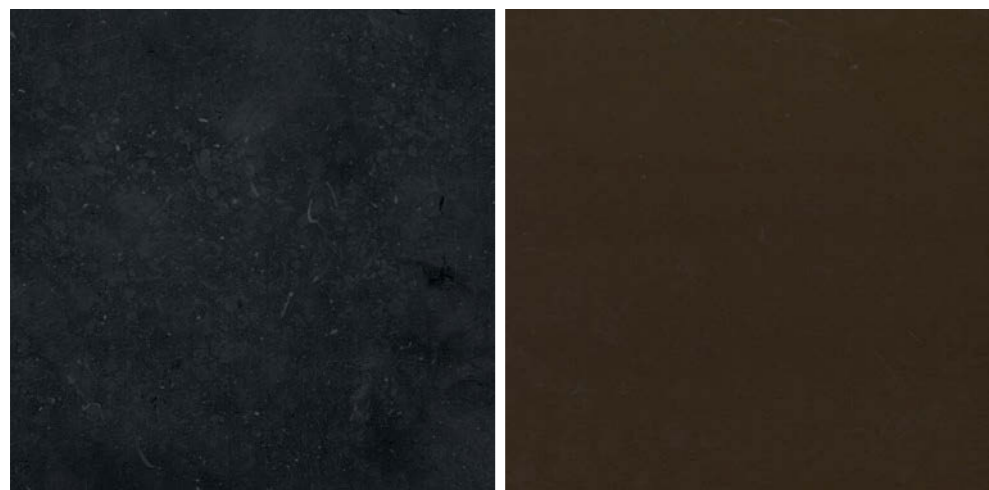
outwards and entrance. outside you can appreciate incline, the new outdoor kitchen made of erafuoco stone. at the end of fuorisalone event, it will be moved to the basement, near bathrooms area. within, the inca model, in dark etna stone matt honed finish with cladding panels in dark etna stone matt honed finish. furthermore maya tall units and cladding panels in dark bronzed aluminum. on the other hand, terra model in green ebony, with dark etna stone matt honed finish worktop and cladding panels.

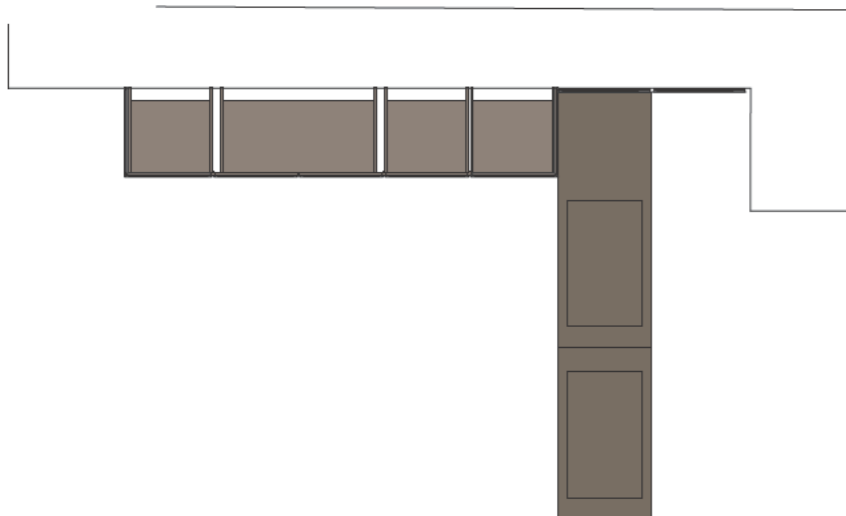
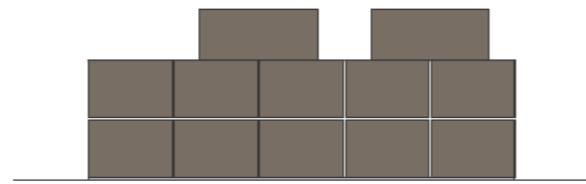
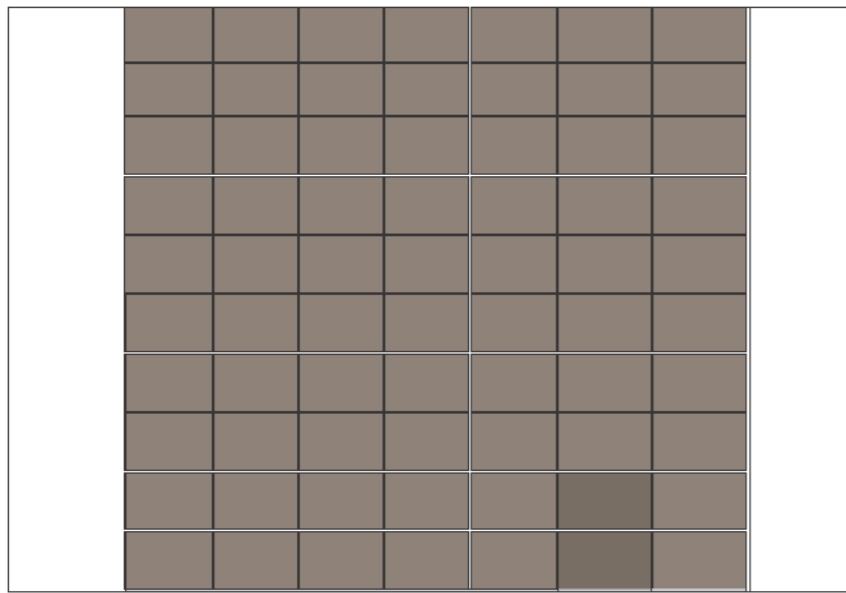


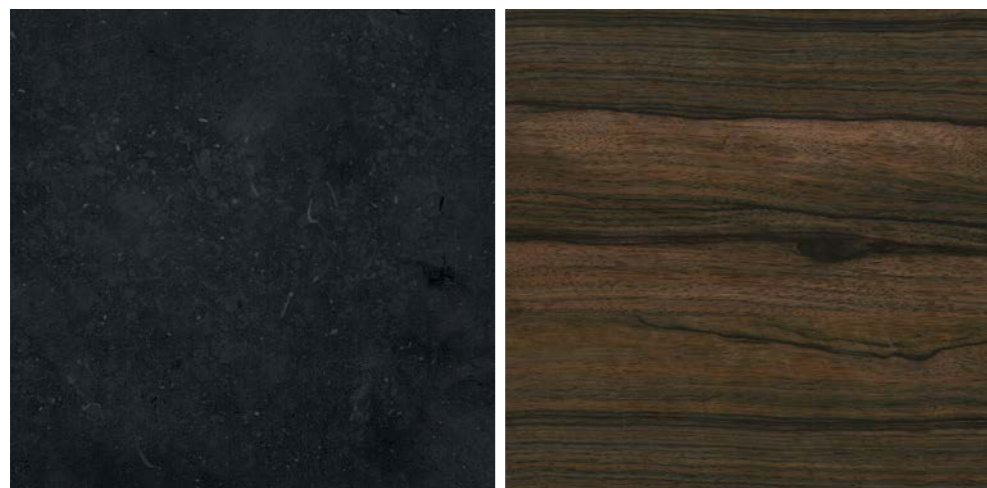


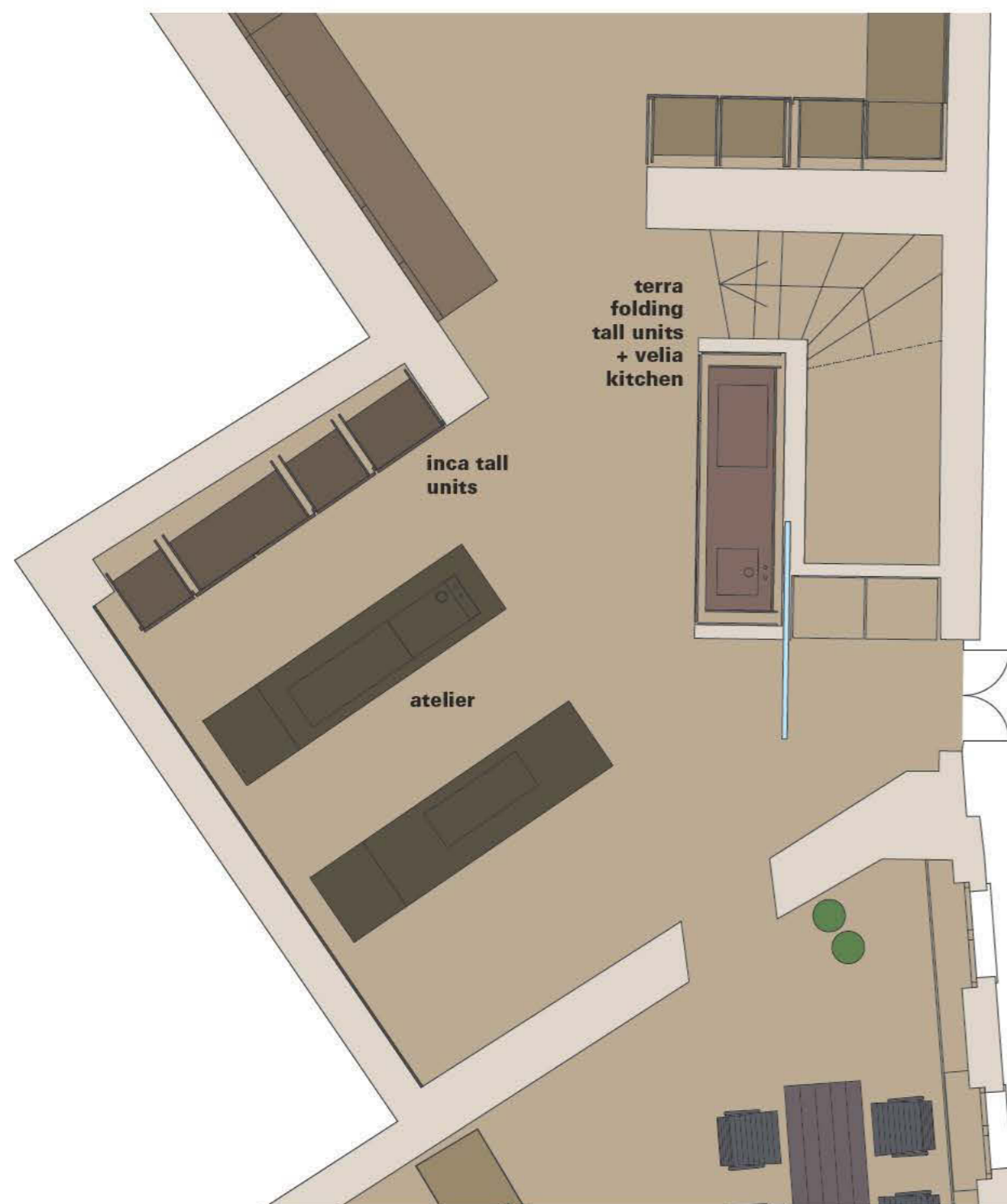


inca and maya models. inca kitchen and cladding panels in dark etna stone matt honed finish , maya tall units, wall units and cladding panels, in dark bronzed aluminum.

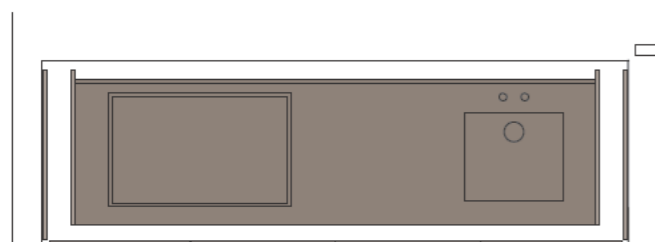
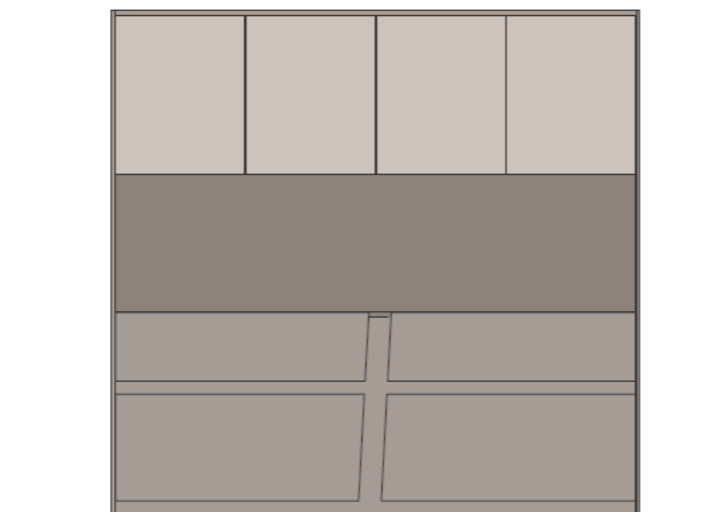
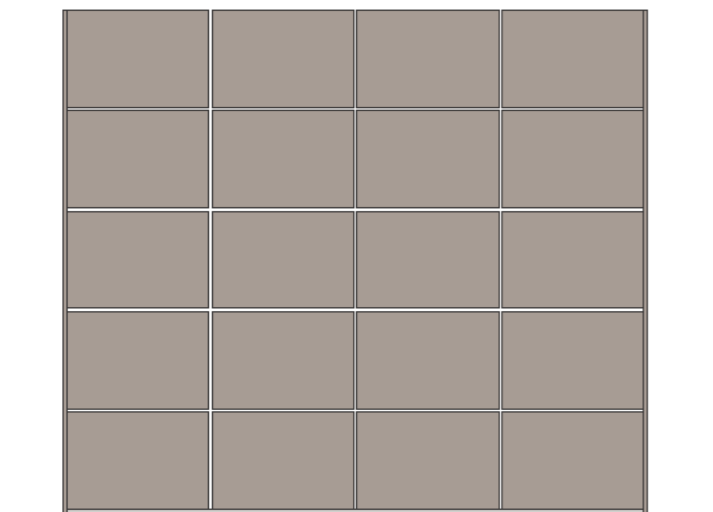




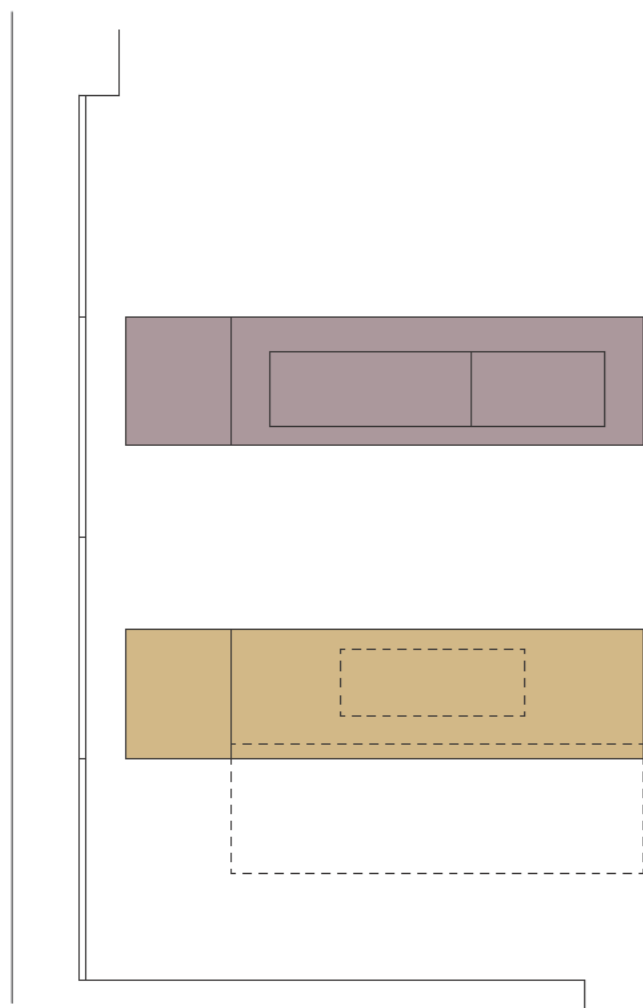
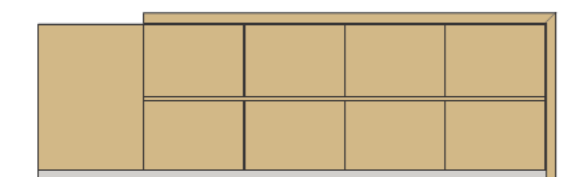
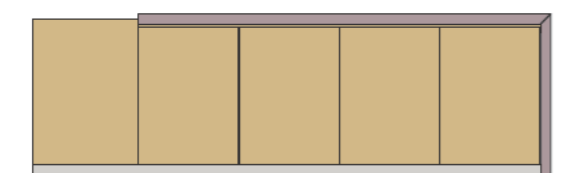




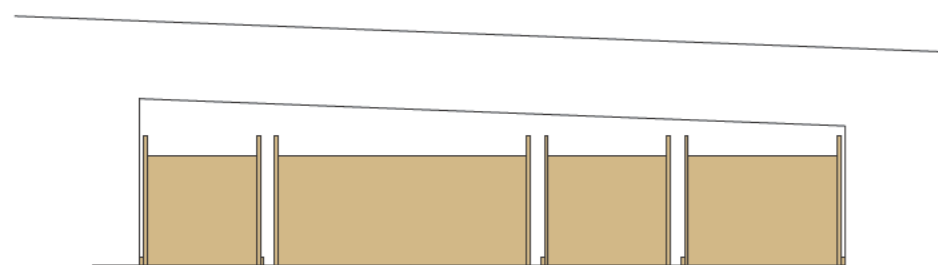
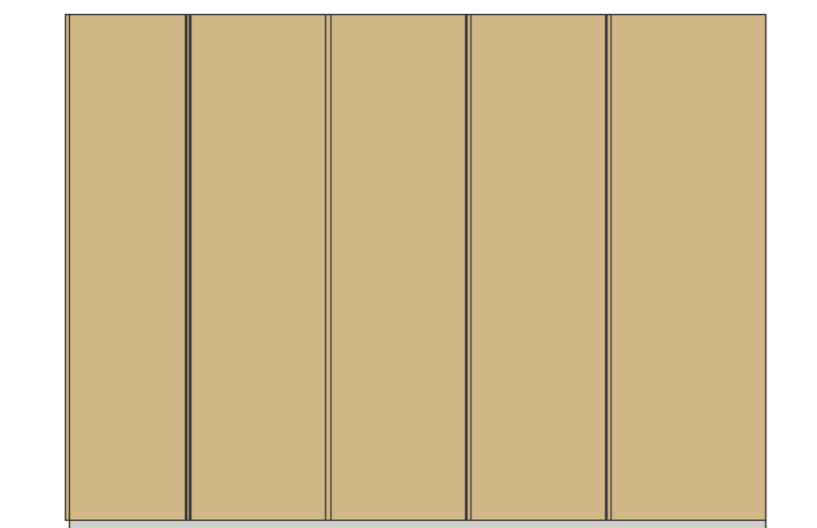
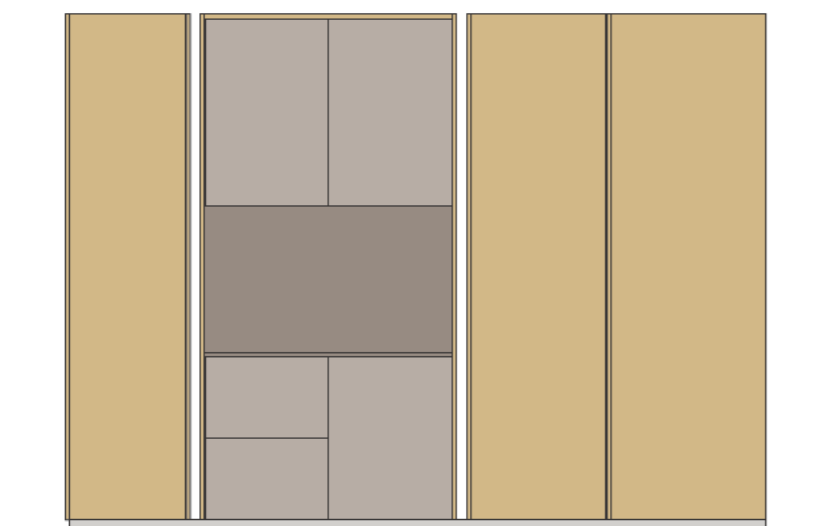
central area. nearby the staircase you can appreciate terra model with folding tall units in matt grigiobeige stained eucalyptus. within the folding units, velia with matt grigiobeige stained eucalyptus fronts, lapis beige stone worktop and upper cabinets in warm grey cementine. on the other hand, two atelier islands. the hob island, is made of fragrant cedar wood with cedar sliding top. underneath, hokkaido white stone worktop. the sink island, is made of cedar wood, fronts and worktop. the basin is made of hokkaido white stone. inca tall units are made of fragrant cedar wood . within the tall units, you can appreciate metha in matt ncs s2005-y50r lacquer with white hokkaido stone worktop.



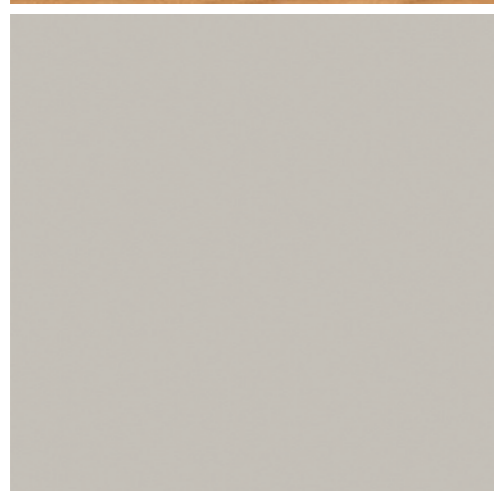
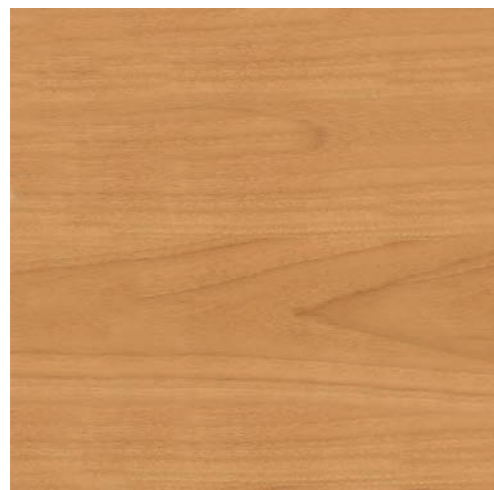
terra and velia. terra folding tall units made of matt grigiobeige stained eucalyptus. within the folding units, velia kitchen finished in matt grigiobeige stained eucalyptus with laspis beige stone worktop. wall units made of warm grey cementine.

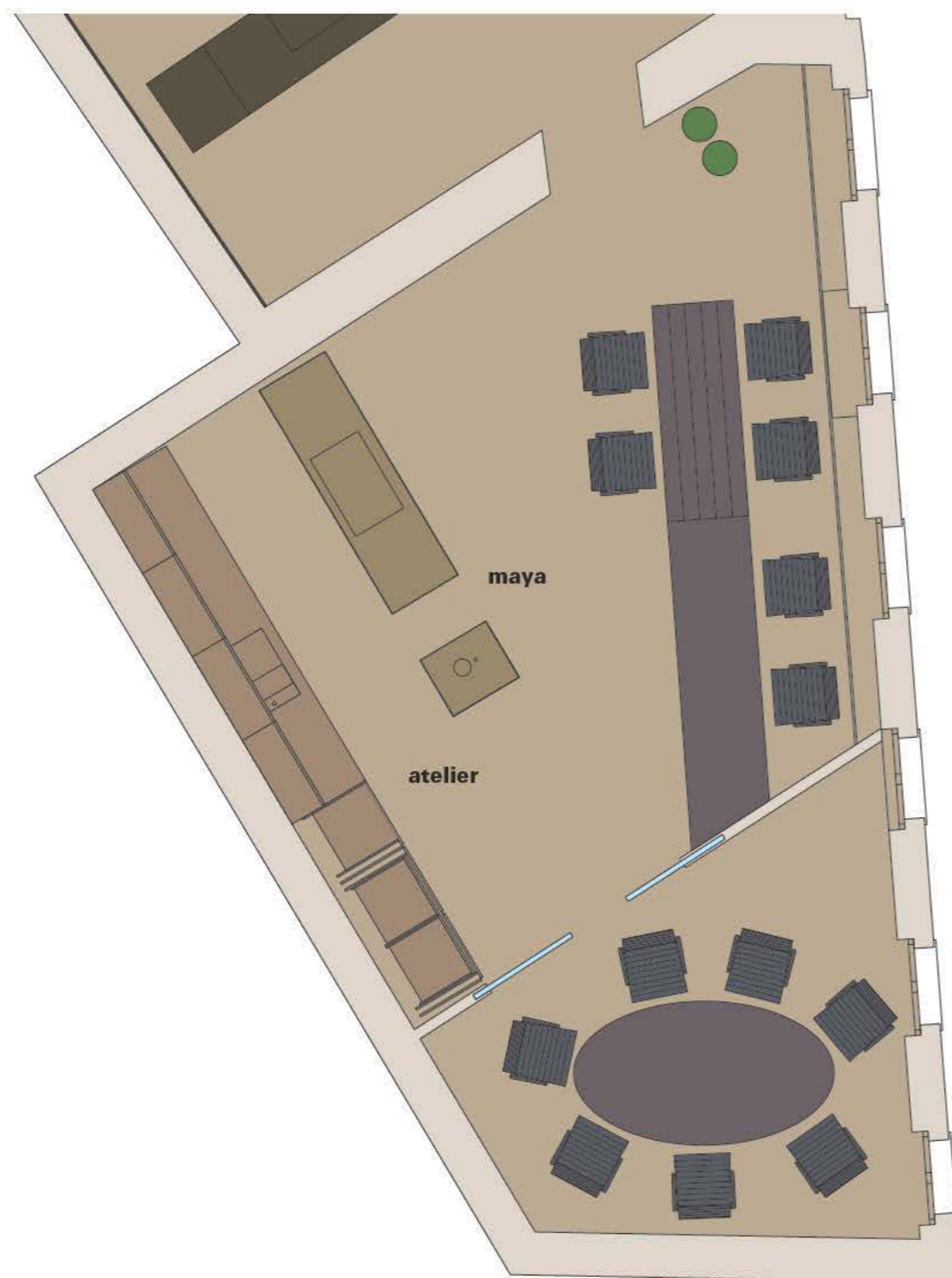


atelier islands. hob island in fragrant cedar wood with sliding worktop, underneath, white hokkaido stone worktop. sink island with fronts and worktop made of fragrant cedar wood, basin made of hokkaido white stone.

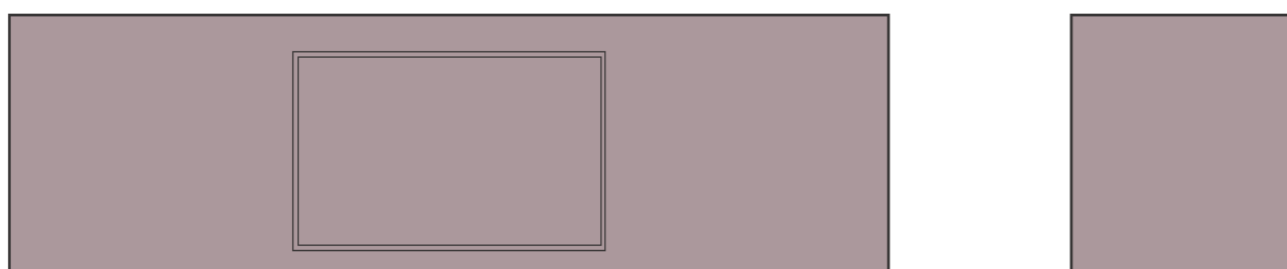
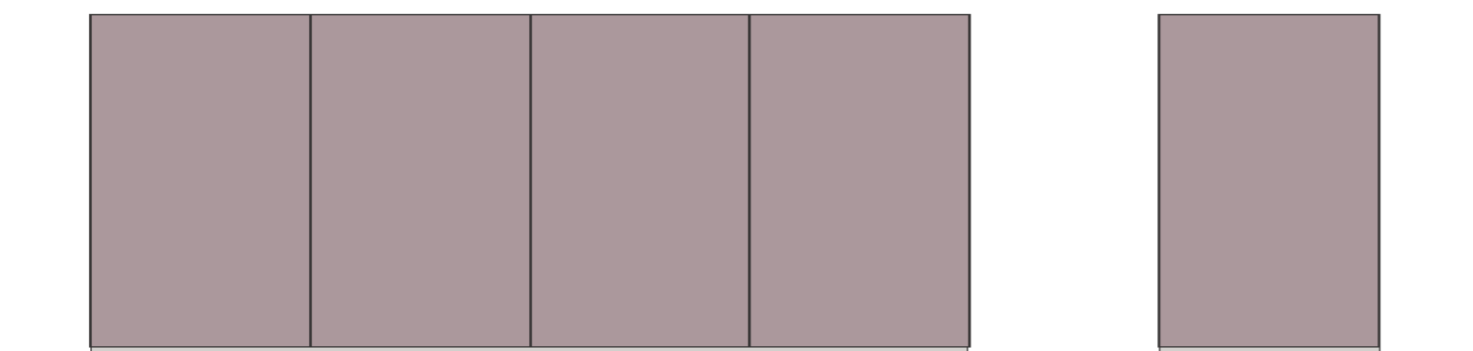


inca and metha models. inca tall units with fronts made of fragrant cedar wood. metha kitchen matt lacquered ncs s2005-y50r, with white hokkaido stone worktop.

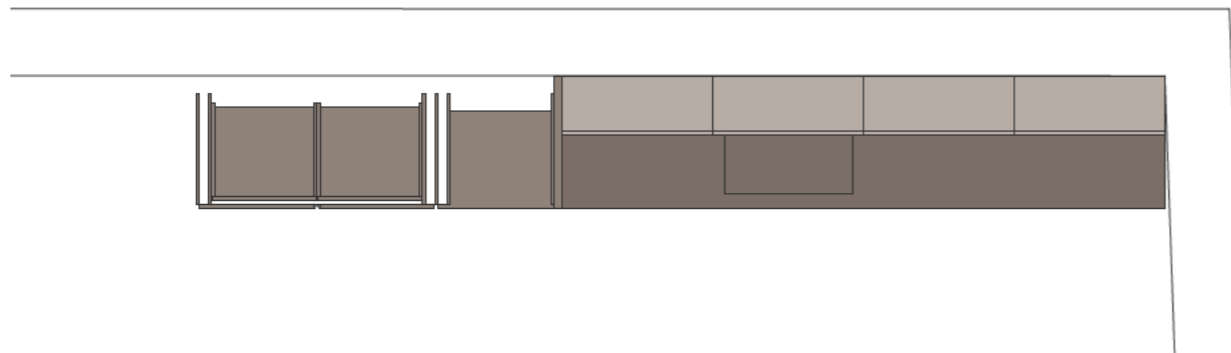
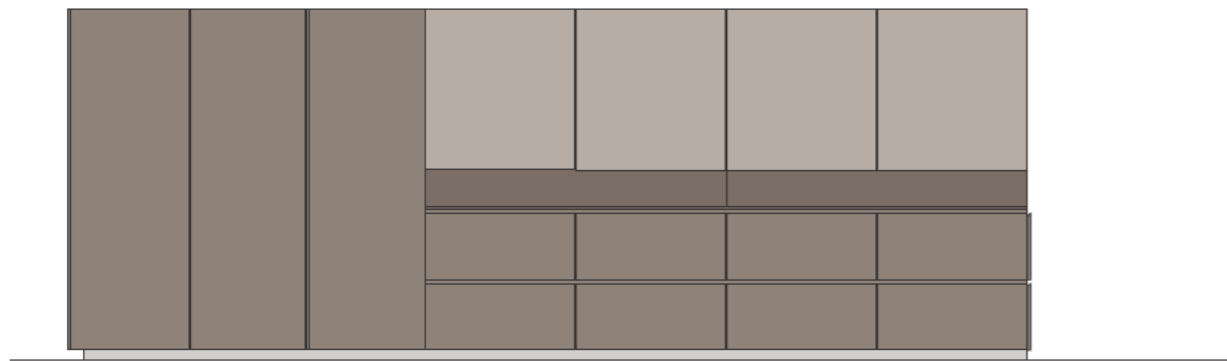
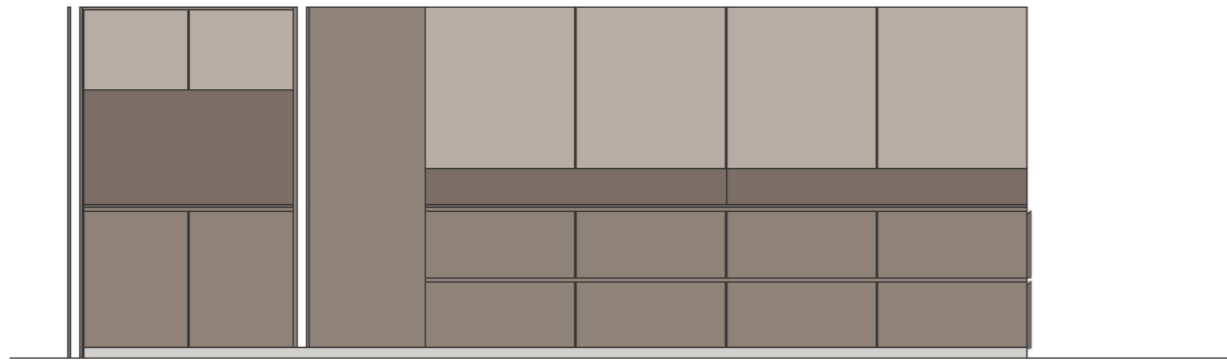




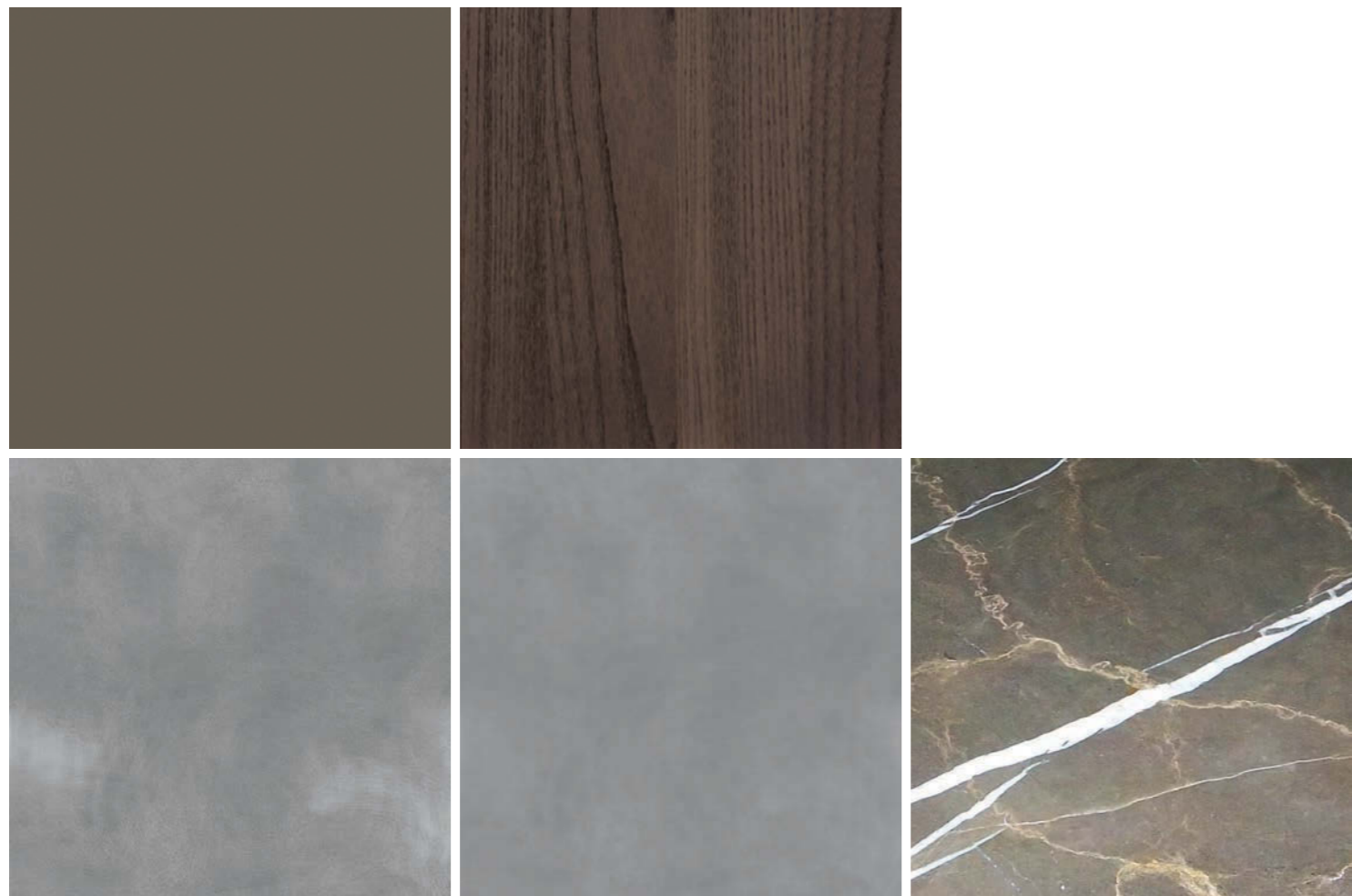
office and meeting area. in front of the office counter, which is made of green stained ebony and linoleum, you can appreciate maya model, in cloudy aluminum with cloudy stainless steel worktop. on the back against the wall, atelier kitchen argilla matt lacquered, with hymera grey worktop. upper cabinets finished in dark elm.



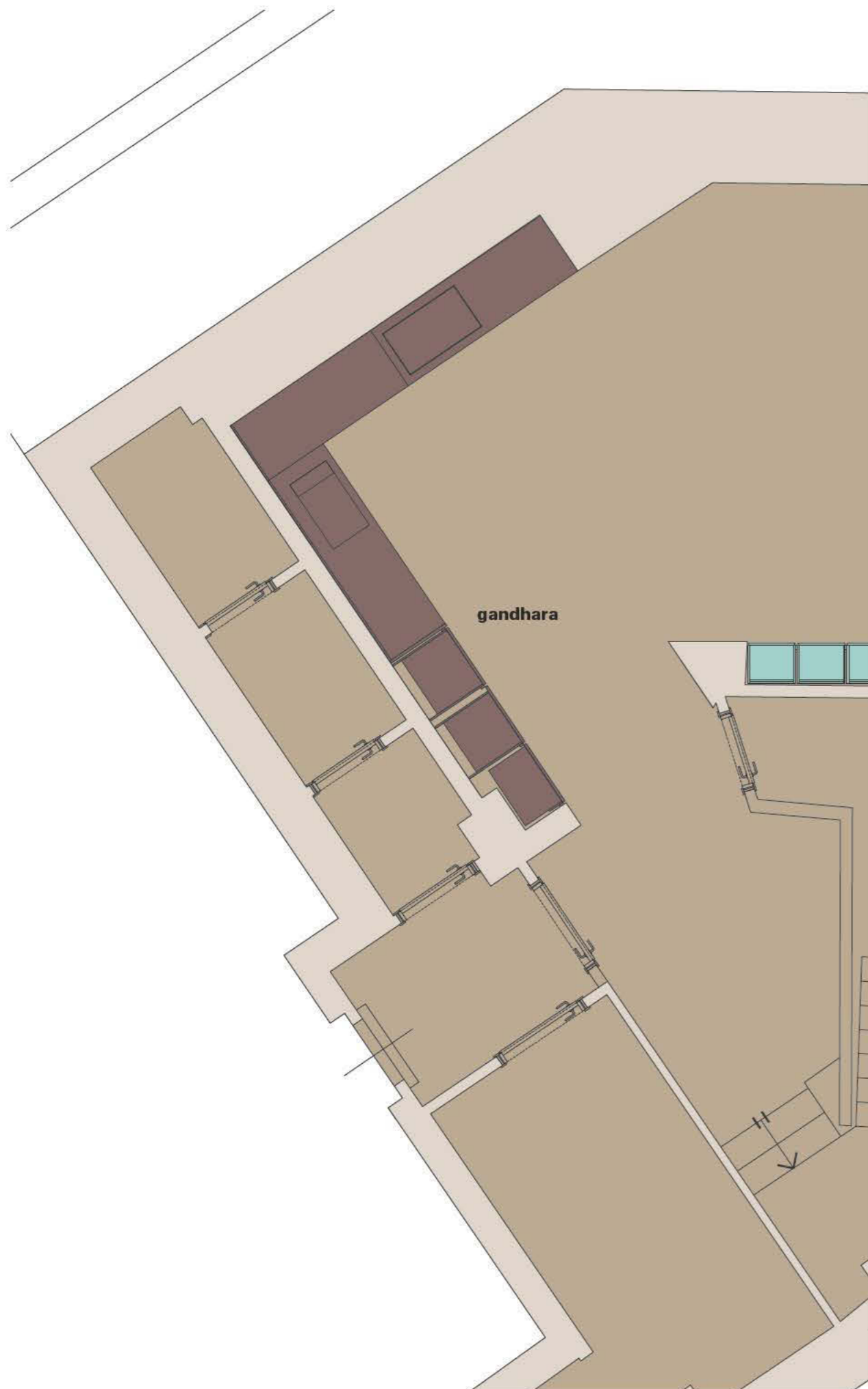
**maya islands with cloudy aluminum
fronts and cloudy stainless steel worktop.**



atelier. argilla matt lacquered fronts with hymera grey stone worktop. upper cabinets finished in dark elm.

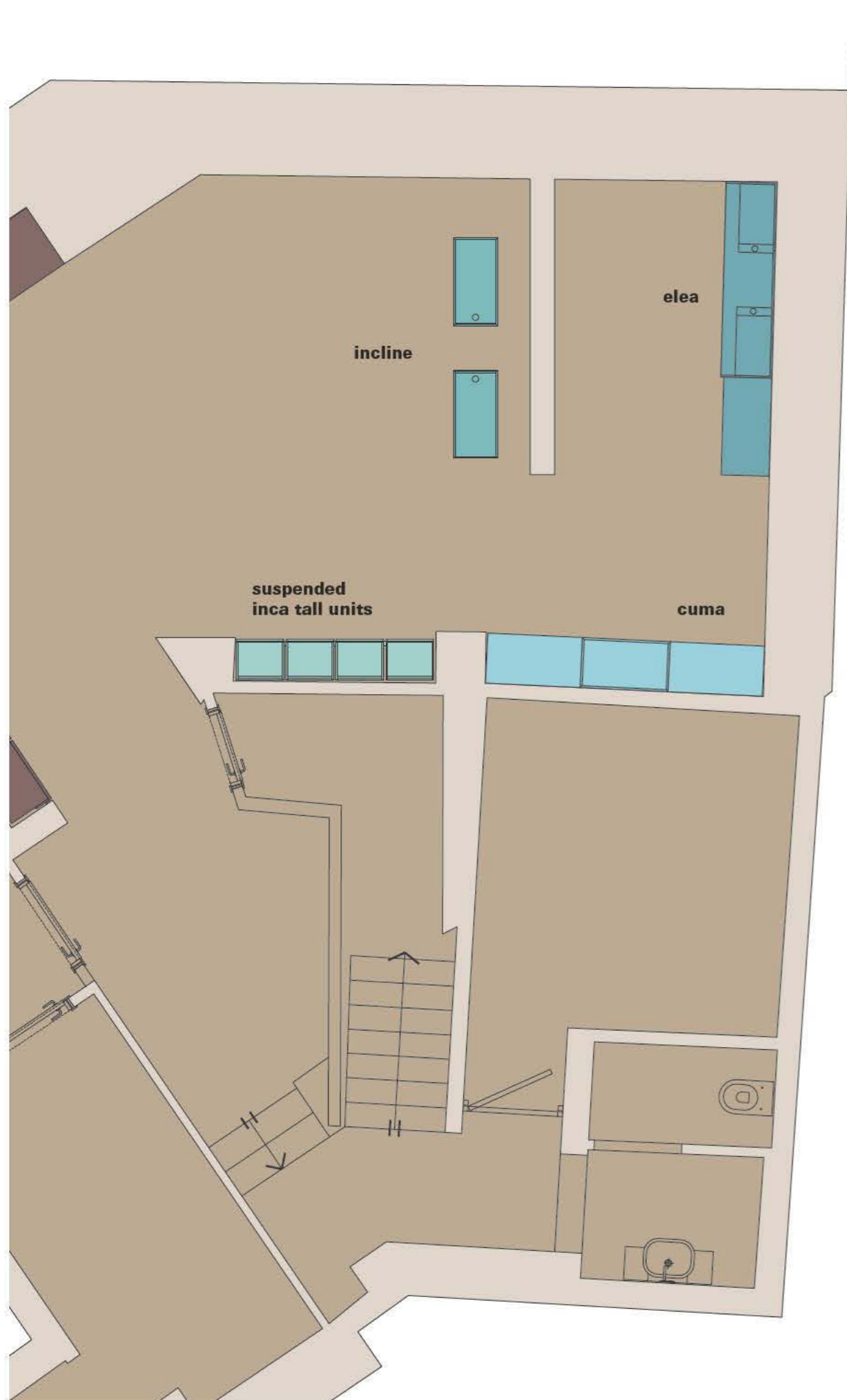


cloudy aluminium
cloudy stainless steel
hymera grey stone
argilla matt lacquer
dark elm

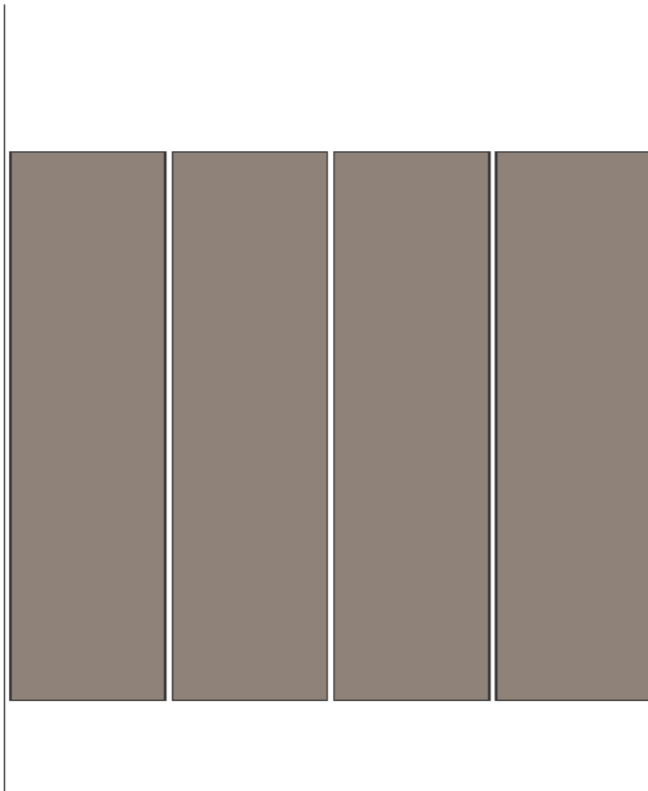


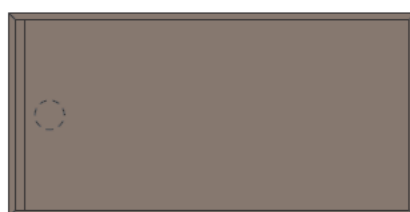
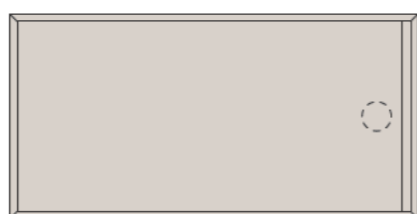
basement. gandhara model glossy ncs s2002-r
lacquered with worktop in deep satin stone,
cladding panels and wall units in tay wood



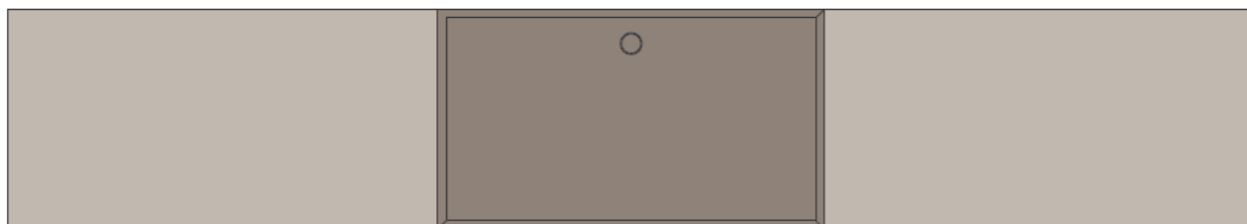
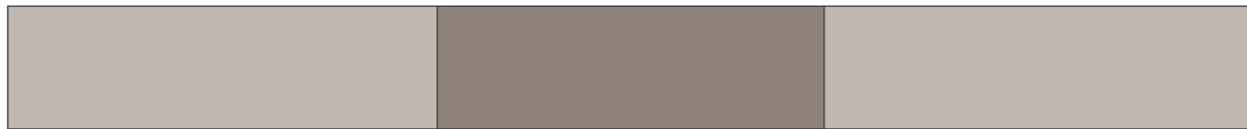
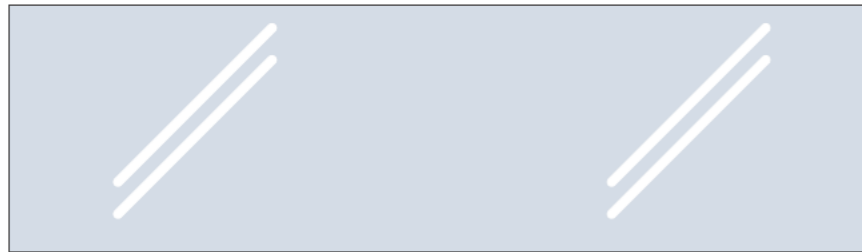


basement bathroom area. hanging tall units in smoked chestnut finish, two incline bathrooms, top side, basin and extractable front made of black masai stone, all the other sides around in indian ink stone. freestanding cuma sink in frozen gold stone. smoked chestnut upper cabinets side by side. underneath the upper cabinet with vertical sliding mirror front, notice the concealed "joystick tap". elea basin in pietra azteca stone and underneath suspended base units made of smoked chestnut. upper cabinets with concealed "joystick tap" and mirror front.

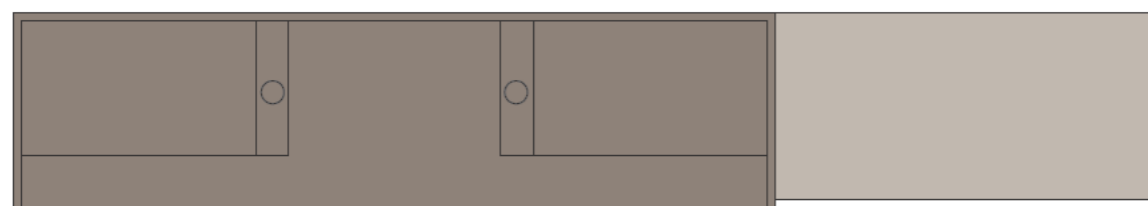
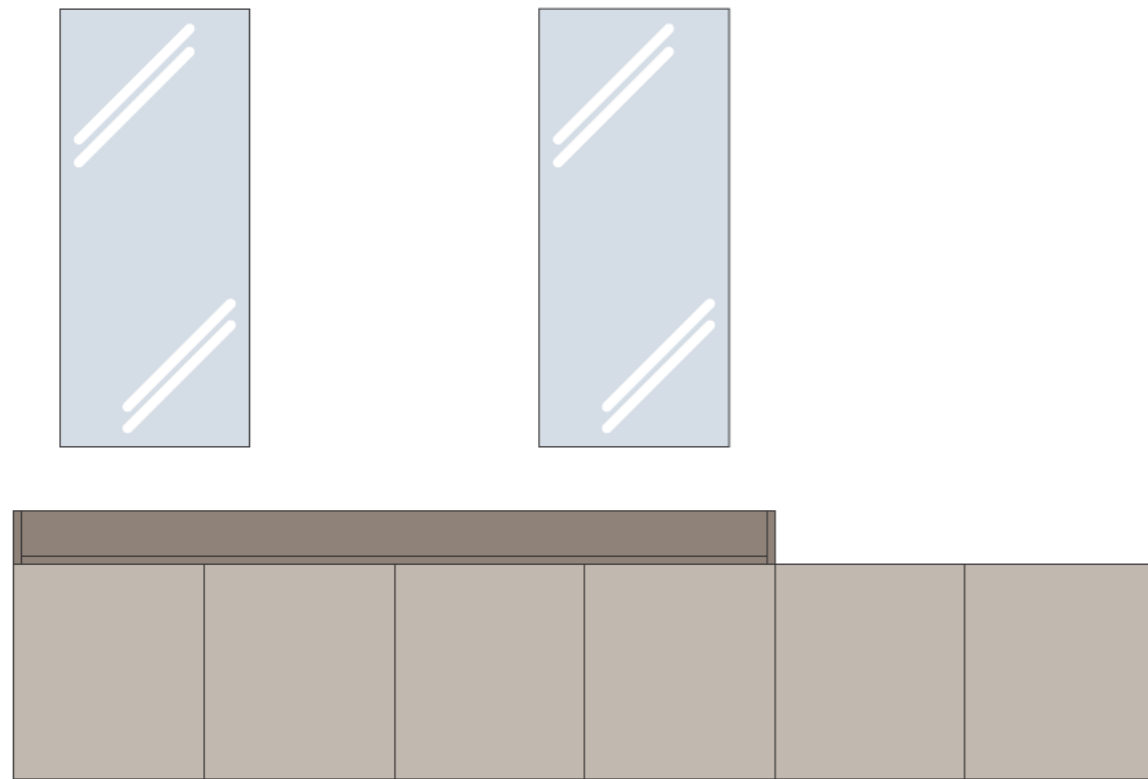




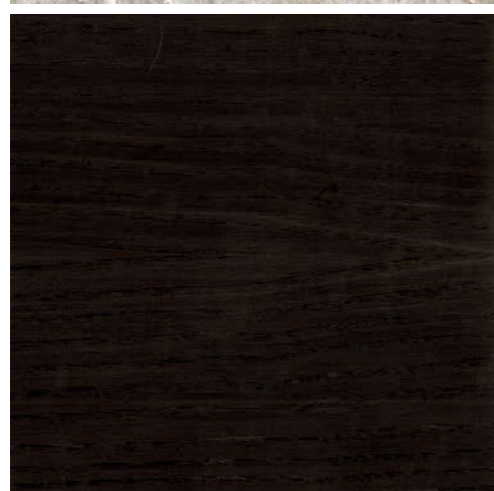
incline bathrooms, top side, basin and extractable front made of black masai stone, all the other sides around in indian ink stone.



freestanding cuma sink in frozen gold stone.
smoked chestnut upper cabinets side by side.
underneath the upper cabinet with vertical sliding
mirror front, notice the concealed "joystick tap".



elea basin in pietra azteca stone and underneath suspended base units made of smoked chestnut. upper cabinets with concealed "joystick tap" and mirror front.



**smoked chestnut
black masai stone
indian ink stone
frozen gold stone
pietra azteca stone**

A S S O
GROUP

minotticucine

via brennero, 41-43
san pietro in cariano
37029 verona italia

t. +39 045 6835111

asso@assospa.it

www.assospa.com

info@minotticucine.it

www.minotticucine.it